

Parker Desk Sets

To keep pen
leakproof and the
point moist

Always replace pen firmly in socket. By doing this the inner sleeve will form an airtight seal with the nozzle of the pen—air cannot enter and dry the point; the ink cannot leak onto the barrel.

When removing pen from socket, turn slightly to release it from inner sleeve.

Always fold pen down onto base, out of the way, when not in use for writing. When pen lies flat there is no tendency for too much ink to gather on the point.

Parker's Desk Sets are made with a patented ball and socket action which allows the pens to swing in all directions.

The Parker Pen Company

Janesville, Wisconsin

New York - Chicago - San Francisco
Boston - Milwaukee - Atlanta - Dallas

FORM 445-3000-10-28 PRINTED IN U.S.A.

An advertisement for Parker fountain pens. The central illustration shows a red fountain pen with a silver nib and a matching red cap with a silver band. The pen is shown in two positions: one upright and one with the cap on. The background is a stylized, decorative frame with red and black accents. The text 'Fountain PEN Satisfaction' is written in a mix of cursive and bold sans-serif fonts. Below the illustration, the text 'The Parker Pen Co. Janesville, Wis.' is printed.

Why a Pen May Irritate You

IF IT SKIPS—especially if a stub or broad point—try holding nib squarely on paper.

IF IT FLOWS TOO FREELY—a warning to you that only two or three drops of ink remain. **REFILL.**

IF YOU HAVE TO JERK THE PEN TO START THE INK—almost an infallible sign the pen has been exposed to the air for some time when not in use, without cap on.

IF THE CAP IS INKY—pen has probably laid flat—fluid will always seek its level. Remedy: carry pen with point upward, or use a **PARKER DESK SET.**

NO MAGIC—a fountain pen cannot perform magic or do the impossible. It needs care and common sense treatment as does your automobile.

TO REMOVE STAINS ON BARREL—moisten a piece of tissue paper and put some good tooth paste on it. Rub the soiled part and see how easily the stain is removed.

Perhaps one pen in a thousand may be sent out that is not right. If you should have that pen, remember we are more anxious to have it made perfect than even you are.

We want you to be 100% satisfied and if you will do your part we will be most happy to do ours.

If you should return your pen for repair or adjustment, be sure to empty ink from barrel, pack carefully, put **NAME** on package and write, stating just what your wishes are.

DON'T

Don't take your pen apart to see how it is made.

Don't mistreat the point. It is made with the precision of a Jewel.

Don't be in a hurry in filling it—give it a chance to drink.

Don't mix inks. Chemical compositions vary and neutralize one another.

Don't attempt to take the nib or point out of the pen. It is fitted by skilled craftsmen and a novice cannot do it.

Don't try to straighten your point if it be bent through accident—take it to a thoroughly reliable repair man.

Don't fill your pen from an open inkwell full of sediment and dirt.

Don't wash your pen with hot water. It ruins the rubber sac.

Don't fail to put the cap on tight thus sealing the pen.

Don't send your pen in for repairs without securely packing it. Also indicate your name and address, and register the package.



Selection of the Proper Point

NOTHING is more personal than a fountain pen. Nothing gives the user greater satisfaction than a properly selected point in a thoroughly reliable pen. On the other hand, nothing gives more distress and annoyance than a point not fitted to the user's hand, or a pen which does not work due to either carelessness or misuse.

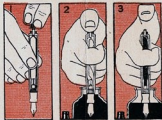
There are six Parker points you can choose from—Extra Fine, Fine, Medium, Broad, Stub and Oblique.

For whatever kind of writing you do, for whatever manner in which you hold your pen, for whatever style of writing is entirely natural, there is a Parker Pen to suit you.

For close figure work or fine memoranda; for general correspondence; for the individual who holds his pen edgewise, or for the one who slants noticeably to the right or left, PARKER makes the proper point.

First, therefore, select the point adapted to your hand.

To Fill Your Pen



WHEN a Parker Pen leaves the factory, it is in perfect adjustment and has been thoroughly tested.

To fill, unscrew the small black cap on the butt-end, exposing the filler-button. (Figure 1). Insert the point in good clean ink, so point is completely immersed, holding the pen with the forefinger and press the button with the thumb. (Figure 2). Release the button but keep the point completely immersed. The pen now starts to feed. Leave it in the ink—thumb off the button—for 10 seconds. It takes a big drink, so give it time. (Figure 3). After filling, wipe the barrel and joint, or other points of ink contact—dry them perfectly. Replace the small cap and the pen is ready to write. Always—when your pen is not in use—screw the cap over the pen point so tightly that it creaks at the last turn. If this is done Parker's Dup-Sleeve Cap absolutely prevents the ink from leaking. Most pens are never completely filled. The users remove them from the ink too quickly, thus filling the pen mostly with air and not ink.

To Clean Your Pen



To clean your pen repeat the filling operation BUT use cold water in place of ink. If the pen has been working all right and has been giving no trouble, do not resort to the cleaning operation too often. You will find if you use good fountain pen ink that your pen will usually function properly.

If, on the other hand, the point has been exposed to the air too long and the ink allowed to dry on it, or the pen gives evidence of being dirty, use the cold water operation.

If you are unable to fill the pen with water; that is, if the pen does not fill when following directions, do not attempt to take it apart, but take it to some reliable repair station and have it examined.

Failure to fill, may mean that the rubber sac has deteriorated or that sediment has clogged the tiny channel in the feed, so that nothing can be taken in.



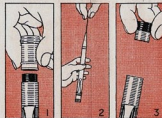
Ink

PARKER PENS will use any good fluid writing ink.

Do not, however, use any substitute for ink. Buy ink only of known value and proven reliability. We strongly recommend PARKER INK for use in our own or any pen. It is of uniform quality; does not thicken, precipitate, or dry up. It is lasting in its record qualities.

Use ink from a corked bottle, avoiding dusty, bubbly and gummy ink, which clogs the feed and necessitates frequent washing. Most pens refuse to work because of dirty ink than from any other cause.

Parker Pencils



To Refill Pencils

turn Gold Crown to left until it clicks. Then slip lead into writing tip—do not try to take out mechanism as in filling some mechanical pencils. Push lead slowly all the way in so clutch will take hold. Non-Clog Propeller turns lead OUT for writing, IN for carrying.

To Reach Eraser

do not turn top but merely pull Gold Crown straight off.

To Reach Extra Lead Chamber

pull out eraser with rocking motion.